

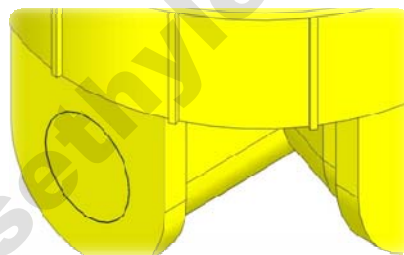


### The method of single pipe parietal connection into the polyethylene manhole (manhole interior part)

As it can be seen in figure 1, polyethylene single pipe parietal connection to polyethylene manhole must be done so that a complete seal occurs.

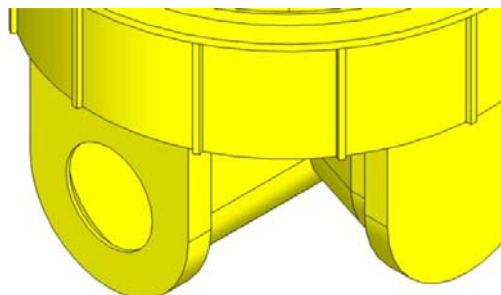


In order to reach standard conditions for polyethylene single pipe parietal connection into the polyethylene manhole, the exact place of interior and exterior parts must be determined and before the installation, the interior and exterior parts must be drilled on manhole frame.



This hole is caused by means of an instrument which cuts circularly or a saw which cuts in column form on a polyethylene manhole parapet. This hole in accordance with pipe external diameter beside required tolerances for installation of the sealing washer as the following formula:

**Drilling diameter on manhole frame = pipe external diameter + 10 mm for the rubber washer**



#### Office Address:

No.18 , Mina blv, Africa St., Tehran/IRAN .....

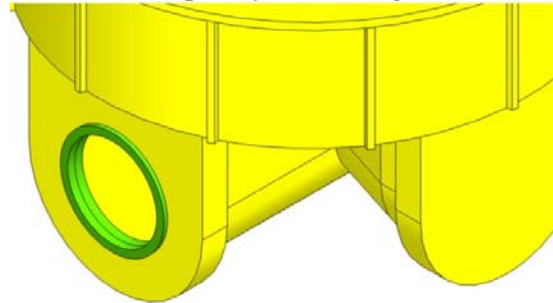
Tel.: (+98 21) 88 20 20 60 - 50 lines

Fax: (+98 21) 88 20 20 81

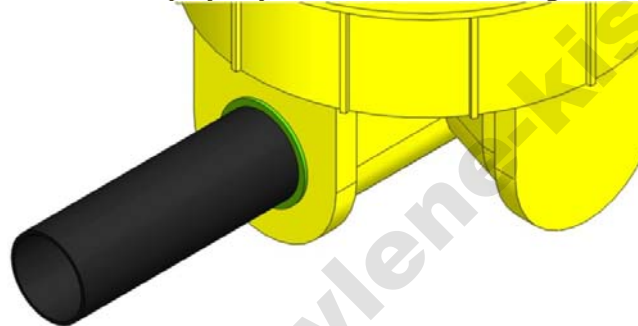
www.parsethylene-kish.com



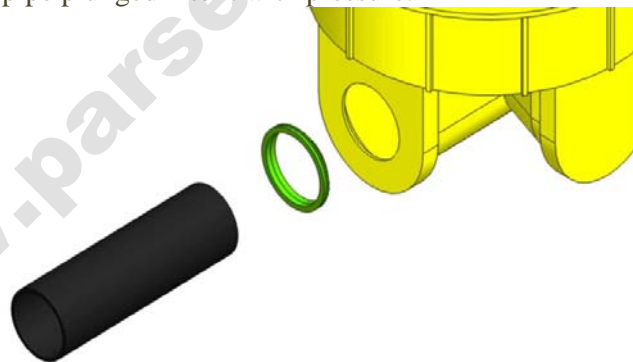
Then we install the sealing washer on the polyethylene manhole parapet. It is necessary to cleanse around the hole completely from filings before installing the rubber washer.



After completion of drilling and putting all washers for required interiors and exteriors, we should place and install polyethylene manhole according to standard instructions.



After fixing polyethylene manhole and installing it, the interior and exterior pipes must be installed at its place. To do this, first the washer must be lubricated with lubricants and then the pipe plunged into it with pressure.



**Prepared by:**  
**Engineering and production supporting of Kish Pars Ethylene Company**

**Office Address:**

No.18 , Mina blv, Africa St., Tehran/IRAN .....

Tel.: (+98 21) 88 20 20 60 - 50 lines

Fax: (+98 21) 88 20 20 81

[www.parsethylene-kish.com](http://www.parsethylene-kish.com)



[www.parsethylene-kish.com](http://www.parsethylene-kish.com)

**Office Address:**

No.18 , Mina blv, Africa St., Tehran/IRAN .....

Tel.: (+98 21) 88 20 20 60 - 50 lines

Fax: (+98 21) 88 20 20 81

[www.parsethylene-kish.com](http://www.parsethylene-kish.com)